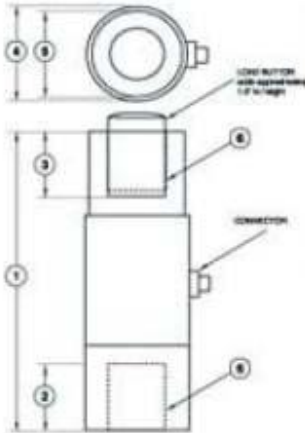


# Morehouse Calibration Grade Load Cells



## DIMENSIONS

See Drawing	MOREHOUSE CALIBRATION GRADE											
	CAPACITY (lb/kN)											
	300K	1335 kN	400K	1780 kN	500K	2225 kN	600K	2670 kN	700K	3115 kN	1000K	4450 kN
	inch	mm	inch	mm	inch	mm	inch	mm	inch	mm	inch	mm
①	16.50	419.1	19.00	482.6	21.26	540.0	23.25	590.6	25.50	647.7	27.80	706.1
②	3.75	95.3	4.00	101.6	4.50	114.3	5.00	127.0	5.50	139.7	6.50	165.1
③	3.75	95.5	4.00	101.6	4.50	114.3	5.00	127.0	5.50	139.7	6.50	165.1
④	5.50	139.7	5.50	139.7	6.00	152.4	7.00	177.8	7.50	190.5	9.50	241.3
⑤	5.00	127.0	5.00	127.0	5.50	139.7	6.50	165.1	7.00	177.8	9.00	228.6
⑥	3/4-12	M76x2	3/4-12	M90x2	4-12	M100x2	4 1/8	M100x2	5-8	M125x4	6-8	M125x4

## SPECIFICATIONS

PARAMETERS	Cal Grade
<b>ACCURACY</b>	
Nonlinearity - %FS	±0.15
Hysteresis - %FS	±0.05
Nonrepeatability - %RO	±0.03
Creep in 20 min - %	±0.05
<b>TEMPERATURE</b>	
Compensated Range-°F	32 to 132
Operating Range-°F	-30 to 200
Effect on Zero-%RO/°F	0.003
Effect on Output-%/°F	0.003
<b>ELECTRICAL</b>	
Rated Output - mV/V (Nominal)	2.0
Excitation - V AC/DC - Nominal	10
Excitation - V AC/DC - Maximum	15
Bridge Resistance-Ohm (Nominal)	350
Zero Balance - %RO	±1.0
Insulation Resistance - Megohm	> 5000
<b>MECHANICAL</b>	
Safe Overload-%CAP	150
Connector	MS3102A-14S-5P

## OPTIONS

**Compression-Only available. Ask factory for specifications and dimensions.**

Multiple Bridge  
Standardized Output  
ASTM E74 Calibration  
Special Thread Size  
Handles

**NOTE: COMPRESSION ONLY Nonlinearity +/- 0.10 %**

## ACCESSORIES

Mating Connector  
Cable Assembly

*Consult factory for more technical information*

**PLEASE NOTE: Physical Sizes may change depending on the capacity and type of Load Cell Ordered. Load Cells are available in different sizes and thread sizes upon request.**

Morehouse Instrument Company  
1742 Sixth Avenue York, PA. 17403, USA  
Tel: 717/843-0081 Fax: 717/846-4193  
Web Address: [www.mhforce.com](http://www.mhforce.com)